



2023

Bariatric Products Catalog

**Enhancing quality
of life is our
driving force**



Right-Sized Equipment for *Every* Body

Expand Your Care & Achieve Optimal Patient Outcomes

At Drive Medical, we understand that one size does not fit all when it comes to durable medical equipment. That's why we're committed to creating innovative equipment solutions that serve the unique needs of patients of size while helping healthcare providers accommodate a broader patient population efficiently.

Our comprehensive range of heavy-duty durable medical equipment makes it easy to provide right-sized support to patients up to 1000 pounds. Engineered with thoughtful features like integrated width expansion, our innovative mobility products, beds, and other equipment ensure the safety and comfort of bariatric patients while streamlining caregiving to enable optimal patient outcomes. And with sturdy, reinforced upholstery and construction, users can feel confident that our equipment is built to support them for the road ahead.

Discover Drive Medical's full line of bariatric DME in the following pages to get started on providing more inclusive care while elevating the patient experience — for *every* body.

Table of Contents

Bathroom Safety	3-4
Commodes	4-5
Cane & Crutches	6-7
Walkers	8
Rollators	9
Transport Chairs	10
Wheelchairs	11-14
Beds	15-18
Pressure Prevention	19-28
Patient Lifts	29-30
Patient Room	31-33

Bathroom Safety

Deluxe Bariatric Shower Chair with Cross-Frame Brace

Item # 12021KD-1

With Back

Item # 12022KD-1

Without Back

- Frame has width/depth cross braces attached with aircraft-type rivets
- Durable, blow-molded plastic bench
- Aluminum frame is lightweight, durable and corrosion proof Drainage holes reduce slipping
- Euro-style clip for leg height adjustment Height adjusts in 1" increments
- Made using recycled materials

[Learn More](#)



Deluxe Bariatric Shower Chair with Cross-Frame Brace

Item # 12029-2

- Frame has width/depth cross braces attached with aircraft-type rivets
- Large seat with 16.5" depth
- Seat height adjusts in 1" increments
- Durable, blow-molded plastic bench
- Tool-free removable back
- Aluminum frame is lightweight, durable and corrosion proof
- Drainage holes reduce slipping
- Made using recycled materials

[Learn More](#)



Bathroom Safety / Commodes

Bariatric Transfer Bench

Item # 12025KD-1

- Tool-free assembly of back, legs and arm
- A-frame provides additional stability
- Height adjusts in ½" increments with unique "Dual Column" extension legs
- All transfer benches are reversible to accommodate any bathroom
- Euro-style clip ensures a secure fit
- No exposed hardware to injure patient
- Large, locking suction cups for added safety
- Made using recycled materials



[Learn More](#)

Bariatric Aluminum Rehab Shower Commode Chair

Item # NRS185008

- Versatile 3-in-1 design enables this model to easily be positioned over a standard toilet, used as a portable self-contained commode or shower chair.
- Simply and quickly adjust the height to achieve the ideal seated position.
- Padded flip-back armrests provide superior support and create a comfortable, non-slip surface for a safe and secure grip when sitting or standing.
- 5" locking casters allow for extra security when the unit is not in motion.
- Durable and easy-to-clean padded seat (22" x 17") and backrest.



[Learn More](#)

Commodes

Deluxe Bariatric Drop-Arm Commode

Item # 11135-1

- Easy-to-release arm mechanism allows for safe lateral patient transfers to and from commode
- Durable, heavy-duty, gray powder-coated steel tubing is sturdy and easy-to-maintain
- Large, durable snap-on seat
- Padded armrests provide comfort and stability
- Pail easily slides in from the front of the commode
- Comes complete with 12 qt commode bucket and cover that removes from front
- Made using recycled materials

[Learn More](#)



Bariatric Folding Commode

Item # 11117N-1

- Tool-free assembly in 3 easy steps
- Easily opens and folds for storage and transportation
- Durable plastic 16 ½" deep snap-on seat with lid
- Plastic armrests for added comfort
- Removable tool-free back
- Comes complete with 12 qt commode bucket with carry handle, cover and splash shield
- Made using recycled materials

[Learn More](#)



Canes & Crutches

Bariatric Quad Cane Small Base

Item # 10316-4

- Lightweight, extra-strong base
- Manufactured with aluminum tubing, steel base
- Comfortable vinyl, contoured hand grips
- Four point base, combined with offset handle provides additional stability and support
- Aluminum handle, reinforced steel base
- Handle height adjusts from 30" to 39"

[Learn More](#)



Bariatric Quad Cane Large Base

Item # 10317-4

- Lightweight, extra-strong base
- Manufactured with aluminum tubing, steel base
- Comfortable vinyl, contoured hand grips
- Four point base, combined with offset handle provides additional stability and support
- Aluminum handle, reinforced steel base
- Handle height adjusts from 30" to 39"

[Learn More](#)



Canes & Crutches

Bariatric Steel Crutches

Item # 10406

Adult: 5'2" - 5'10"

Item # 10408

Tall Adult: 5'10" - 6'6"

- Durable, steel construction
- Push buttons easily adjust height in 1" increments
- Comfortable, contoured underarm design
- Easy wing nut adjustments for hand grips
- Large, non-skid jumbo-size vinyl contoured tips

[Learn More](#)



Bariatric Steel Forearm Crutch

Item # 10403HD

- Vinyl-coated, ergonomically contoured arm cuffs molded for comfort and stability
- Leg and forearm sections adjust independently for optimal sizing
- Vinyl hand grips are comfortable and durable
- Extra-large tips for added stability

[Learn More](#)



Walkers

Bariatric Aluminum Folding Walker Two Button

Item # 10220-1

- Steel legs and side braces
- Precision design provides additional strength while adding minimal weight
- Wider and deeper frame design accommodates individuals up to 600 lbs
- Easy push-button mechanisms may be operated by fingers, palms or side of hand
- Each side operates independently to allow easy movement through narrow spaces and greater stability while standing
- Vinyl-contoured hand grip

[Learn More](#)



Bariatric Aluminum Folding Walker Two Button With Wheels

Item # 10220-1WW

- Steel legs and side braces
- Precision design provides additional strength while adding minimal weight
- Wider and deeper frame design accommodates individuals up to 600 lbs
- Easy push-button mechanisms may be operated by fingers, palms or side of hand
- Each side operates independently to allow easy movement through narrow spaces and greater stability
- Vinyl-contoured hand grip

[Learn More](#)



Rollators

Go-Lite Bariatric Steel Rollator

Item # 10215BL-1 Blue
Item # 10215RD-1 Red

- 8" casters with soft-grip tires are ideal for indoor and outdoor use
- Soft padded oversized seat
- Comes with large 20.5" (W) x 4.5" (H) x 9" (D) basket that can be mounted under seat
- Tool-free removable padded backrest for comfort
- Special loop lock made of internal aluminum casting operates easily and ensures safety
- Handles easily adjustable in height with self-threading knob

[Learn More](#)



Nitro HD Rollator

Item # 10266HD-BK

- Attractive, Euro-style design
- Brake cable inside frame for added safety
- Handle height easily adjusts with unique push button
- Unique suspension system for support and comfort
- Back support height easily adjusts with tool-free thumb screw
- Caster fork design enhances turning radius
- Large 10" front casters allow optimal steering and rolling comfort
- Easily folds with one hand to ultra-compact size for storage
- Cross-brace design allows for side-to-side folding and added stability
- Removable zippered storage bag

[Learn More](#)



Transport Chairs

Bariatric Aluminum Transport Chair

Item # ATC22-R

- Weighs only 33 lbs
- Attachable push bar with padded foam grip
- 12" rear flat-free wheels
- Comes with seat belt
- Comes with swing-away footrests and anti-tippers
- Back folds down for convenient storage
- Padded armrests provide additional comfort
- Heavy-duty, nylon reinforced upholstery
- Comes with hand wheel lock lever and companion activated wheel locks

[Learn More](#)



Bariatric Steel Transport Chair

Item # BTR20-B Blue | BTR20-R Red
Item # BTR22-B Blue | BTR22-R Red

- Reinforced steel frame provides added support
- Dual, reinforced steel cross braces
- Available in blue or red frames
- 12" rear flat free wheels
- Comes with swing-away footrests
- Padded armrests provide additional comfort
- Heavy-duty, nylon reinforced upholstery with a back carry pouch
- Removable, reversible desk-length arms
- Companion activated wheel locks

[Learn More](#)



Wheelchairs



Bariatric Sentra Extra-Heavy-Duty Wheelchair

STD20DDA-ELR: 20" Desk Arms, Legrests

STD22DDA-ELR: 22" Desk Arms, Legrests

STD24DDA-ELR: 20" Desk Arms, Legrests

STD20DDA-SF: 20" Desk Arms, Footrests

STD22DDA-SF: 22" Desk Arms, Footrests

STD24DDA-SF: 20" Desk Arms, Footrests

- Carbon Steel frame with silver vein finish is attractive, and easy-to-maintain
- Reinforced steel gussets at all weight bearing points provide additional strength
- Durable, heavy-gauge reinforced naugahyde upholstery
- Comes standard with carry pocket on backrest
- Reinforced side frame, caster journals and dual cross bars
- Dual-position front fork
- Dual-position front frame
- Composite Mag-style wheels with chrome hand rim are lightweight and maintenance free
- Hemi-adjustable caster is optional (Part #STDS1074)
- Precision sealed wheel bearings in front and rear ensure long-lasting performance and reliability
- Padded armrests provide added patient comfort
- Comes with swing-away footrests or elevating leg rests with tool-free adjustable length riggings
- Comes with push-to-lock wheel locks

[Learn More](#)

Wheelchairs



Bariatric Sentra EC Heavy-Duty Wheelchair

STD20ECDDAHD-ELR: 20" Desk Arms, Legrests

STD20ECDFAHd-ELR: 20" Full Arms, Legrests

STD22ECDDAHD-ELR: 22" Desk Arms, Legrests

STD22ECDFAHd-ELR: 22" Full Arms, Legrests

STD24ECDDAHD-ELR: 24" Desk Arms, Legrests

STD24ECDFAHd-ELR: 24" Full Arms, Legrests

STD20ECDDAHD-SF: 20" Desk Arms, Footrests

STD20ECDFAHd-SF: 20" Full Arms, Footrests

STD22ECDDAHD-SF: 22" Desk Arms, Footrests

STD22ECDFAHd-SF: 22" Full Arms, Footrests

STD24ECDDAHD-SF: 24" Desk Arms, Footrests

STD24ECDFAHd-SF: 24" Full Arms, Footrests

- Carbon Steel frame with silver vein finish is attractive, and easy-to-maintain
- Double embossed vinyl upholstery is durable, lightweight, attractive and easy-to-clean
- Standard dual axle provides easy transition of seat to hemi-level
- Urethane tires mounted on composite wheels provide durability and low maintenance

- 8" front casters, adjustable in three positions
- No maintenance, sealed, precision bearings
- Padded armrests provide additional comfort
- Comes with swing-away footrests or elevating leg rests with tool-free adjustable length riggings
- Aluminum foot plates
- Comes with push-to-lock wheel locks

[Learn More](#)

Wheelchairs



Bariatric Sentra EC Heavy-Duty, Extra-Wide Wheelchair

STD26ECDDA: 26" Detachable Desk Arms

STD28ECDDA: 28" Detachable Desk Arms

STD30ECDDA: 30" Detachable Desk Arms

STD26ECDFA: 26" Detachable Full Arms

STD28ECDFA: 28" Detachable Full Arms

STD30ECDFA: 30" Detachable Full Arms

- Carbon Steel frame with silver vein finish is attractive, and easy-to-maintain
- Reinforced steel gussets at all weight bearing points provide additional strength
- Durable reinforced nylon upholstery
- Steel, spoke wheels are strong and maintenance free
- Heavy-duty, flat-free 8" front casters are adjustable in two positions
- Extra-heavy-duty front forks
- Reinforced side frame, caster journals and dual cross bars
- Precision sealed wheel bearings in front and rear ensure long-lasting performance and reliability
- Extra-large, padded armrests provide comfort and support
- Riggings have extra-large, heavy-duty, aluminum foot plates that provide maximum support, are attractive and crack proof (Must be ordered separately)
- Comes with push-to-lock wheel locks

[Learn More](#)

Wheelchairs



Deluxe Sentra Full Reclining Wheelchair

STD22RBDDA: 22" Detachable Desk Arms, Legrests

- Hydraulic reclining mechanism allows for infinite adjustments up to 180°
- Durable, heavy-gauge naugahyde upholstery
- Carbon Steel frame with triple-coated chrome for an attractive, chip-proof, maintainable finish
- Composite Mag-style wheels with chrome hand rims are lightweight and maintenance free
- 8" front casters
- Padded armrests provide added patient comfort
- Wheels set back on frame prevent tipping
- Precision sealed wheel bearings in front and rear ensure long-lasting performance and reliability
- Rear anti-tippers standard
- Comes standard with swing-away elevating legrests
- Aluminum foot plates are attractive, crack-proof and lightweight
- Front caster forks are adjustable in two positions
- Carry pocket standard
- Headrest extension with cushioned head immobilizer standard
- Comes with push-to-lock wheel locks

[Learn More](#)

Homecare Beds



Lightweight Bariatric Homecare Bed

Item # 15300LW: 42"W x 80"L, Dual Full Electric w/Hi Lo

- Lightweight frame design offers providers easier and more manageable bed deliveries and assemblies
- Allows for additional space for patient comfort and recovery as well as caregiver efficiency
- Product Safety & Performance Standards: Meets IEC 60601-2-52; 60601-1; 60601-1-2; 60601-1-11
- Full electric bariatric homecare bed with dual motor assembly for head and frame adjustability
- Ultra lightweight frame is easily set up by 1 individual; no links to connect and no tools required
- Square tube steel frame slat deck provides durable strength, no-sag mattress support, and is easy to clean
- Scratch resistant wood grain panel bed ends include hi lo motors for frame height adjustability
- UL approved motor is self contained for reduced weight and noise and can be easily installed and removed with patient in bed
- Reduce service calls with large glow in the dark hand pendant that is easy-to-use for adjustments; LED indicators available for power and lockout included

[Learn More](#)

Homecare Beds



Lightweight Bariatric Homecare Bed

Item # 15302LW: 48"W x 80"L, Linear Full Electric w/HI Lo

- Lightweight frame design offers providers easier and more manageable bed deliveries and assemblies
- Allows for additional space for patient comfort and recovery as well as caregiver efficiency
- Product Safety & Performance Standards: Meets IEC 60601-2-52; 60601-1; 60601-1-2; 60601-1-11
- Full electric bariatric homecare bed with dual motor assembly for head and frame adjustability
- Ultra lightweight frame is easily set up by 1 individual; no links to connect and no tools required
- Square tube steel frame slat deck provides durable strength, no-sag mattress support, and is easy to clean
- Scratch resistant wood grain panel bed ends include hi lo motors for frame height adjustability
- UL approved motor is self contained for reduced weight and noise and can be easily installed and removed with patient in bed
- Reduce service calls with large glow in the dark hand pendant that is easy-to-use for adjustments; LED indicators available for power and lockout included

[Learn More](#)

Homecare Beds



Lightweight Bariatric Homecare Bed

Item # 15303LW: 54"W x 80"L, Dual Full Electric w/Hi Lo

- Lightweight frame design offers providers easier and more manageable bed deliveries and assemblies
- Allows for additional space for patient comfort and recovery as well as caregiver efficiency
- Product Safety & Performance Standards: Meets IEC 60601-2-52; 60601-1; 60601-1-2; 60601-1-11
- Full electric bariatric homecare bed with dual motor assembly for head and frame adjustability
- Ultra lightweight frame is easily set up by 1 individual; no links to connect and no tools required
- Square tube steel frame slat deck provides durable strength, no-sag mattress support, and is easy to clean
- Scratch resistant wood grain panel bed ends include hi lo motors for frame height adjustability
- UL approved motor is self contained for reduced weight and noise and can be easily installed and removed with patient in bed
- Reduce service calls with large glow in the dark hand pendant that is easy-to-use for adjustments; LED indicators available for power and lockout included

[Learn More](#)



Prime Plus Care Bed Model P750

Item # P750

- 11" low height 30" high working height
- Push button integrated width expansion from 39" to 48" width
- Integrated 80", 84" and 88" sleep surface length helps comfortably accommodate the tallest residents
- One touch floor lock
- Quiet, smooth operation/Easy-to-use Hand Pendant
- Cardiac Comfort Chair
- 4 heavy duty locking casters roll easy at any height and lock secure
- Fixed adjustable wall bumper
- Warranty: 15 years on frame lifetime on welds 5 years on electronics
- Options:
 - Deluxe Assist Rails, Assist Bars
 - Bed ends available in 2 styles and 3 colors
 - Trapeze
 - Battery Backup
- 750 lbs weight capacity
- 700 lbs Net weight capacity

[Learn More](#)

Pressure Prevention

Bariatric Foam Mattresses

Item # 15301: 42"W x 80"L x 6.5"H

Item # 15301-84: 42"W x 84"L x 6.5"H



- Nylon top cover is fluid-resistant and easy to clean for extended life and service
- Vinyl bottom is waterproof
- Fire Retardant: Mattress meets the requirements of 16 CFR Part 1632 – Standard for the Flammability of Mattresses and Mattress Pads and 16 CFR Part 1633 (Federal Flammability (open flame) standard for mattress sets) when used without a foundation
- High-Density foam mattress for the bariatric patient
- Solid foam inner core provides comfort, support and durability in a one-piece construction
- Latex free

[Learn More](#)



Bariatric Foam Mattresses

Item # 15310: 48"W x 80"L x 6.5"H

Item # 15310-84: 48"W x 84"L x 6.5"H

Item # 15312: 54"W x 80"L x 6.5"H

Item # 15312-84: 54"W x 84"L x 6.5"H



- Nylon top cover is fluid-resistant and easy to clean for extended life and service
- Vinyl bottom is waterproof
- Fire Retardant: Mattress meets the requirements of 16 CFR Part 1632 – Standard for the Flammability of Mattresses and Mattress Pads and 16 CFR Part 1633 (Federal Flammability (open flame) standard for mattress sets) when used without a foundation
- High-Density foam mattress for the bariatric patient
- Solid foam inner core provides comfort, support and durability in a one-piece construction
- Latex free

[Learn More](#)



Pressure Prevention

Multi-Ply ShearCare 1500 Pressure Redistribution Foam Mattress



Item # 1500SC-42-FB

- Bariatric, latex free, therapeutic foam mattress provides pressure redistribution and shear/friction reduction
- Full width top layer is high-resilient, high-density die-cut foam for pressure redistribution and maximum support
- High-density foam bottom layer provides support and stability for the bariatric patient
- Patented LuraQuilt foam heel section offloads pressure from vulnerable heels
- Removable premium, multi-stretch cover is fluid resistant, low shear and vapor permeable helping protect the skin from friction and moisture
- Meets flammability standard CFR 1632 and CFR 1633

[Learn More](#)



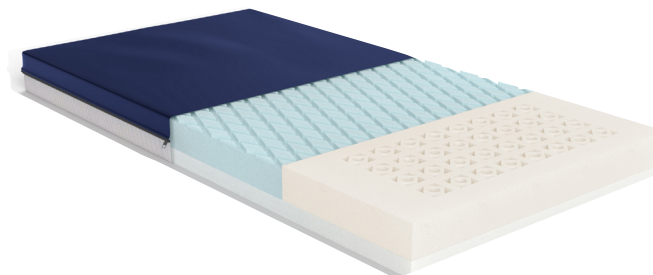
Multi-Ply ShearCare 1500 Pressure Redistribution Foam Mattress



Item # 1500SC-48-FB

- Bariatric, latex free, therapeutic foam mattress provides pressure redistribution and shear/friction reduction
- Full width top layer is high-resilient, high-density die-cut foam for pressure redistribution and maximum support
- High-density foam bottom layer provides support and stability for the bariatric patient
- Patented LuraQuilt foam heel section offloads pressure from vulnerable heels
- Removable premium, multi-stretch cover is fluid resistant, low shear and vapor permeable helping protect the skin from friction and moisture
- Meets flammability standard CFR 1632 and CFR 1633

[Learn More](#)



Pressure Prevention

Premium Guard Gel Overlay

Item # 14901

- Best in class gel overlay optimizes pressure redistribution and is now available in up to 500 lbs weight capacity
- 15 gel bladders cover entire patient contact area for the prevention and treatment of pressure ulcers
- Full length "head-to-toe" gel bladders minimize "bottoming out" and "pitting"
- New convoluted foam topper vastly improves patient comfort and air circulation
- 4 elastic corner straps secure overlay to mattress
- Urethane coated nylon cover is water resistant and vapor permeable
- Vinyl base is stain resistant and waterproof



[Learn More](#)

Pressure Prevention



Med-Aire Plus 10" Bariatric Alternating Pressure and Low Air Loss Mattress Replacement System

Item # 14030: 42"W X 80"L X 10"H | Weight Capacity 600 lbs

Item # 14048: 42"W X 80"L X 10"H | Weight Capacity 750 lbs

Item # 14054: 42"W X 80"L X 10"H | Weight Capacity 1000 lbs

Item # 14060: 42"W X 80"L X 10"H | Weight Capacity 1000 lbs

- Active combination bariatric therapy system provides both alternating pressure and low air loss to optimize pressure redistribution, shear/friction reduction, and microclimate control
- Designed to prevent, treat and heal all stages of pressure ulcers in the home or long term care setting
- Digital control unit offers 4 cycle times and adjustable comfort weight settings for optimal immersion and patient satisfaction
- 3 diagnostic audio and visual alarms alert for issues with air pressure, the system, or power
- System includes 20 individual air cells to maximize immersion and envelopment with pillow feature for head stability & comfort
- Advanced Clinical and Care Giver Features: Auto-Firm, Seat Inflate, auto-recovery, microprocessing feedback, lock-out and more!
- Cell-on-cell designed air cells prevent "bottoming out" and provide up to 24 hours of power outage protection
- 10" deep air cells are easily removed with quick disconnects for convenient servicing
- Removable quilted Nylon cover is fluid resistant, low shear and vapor permeable helping protect the skin from friction and moisture
- CPR valve allows for rapid deflation

[Learn More](#)

Pressure Prevention



Harmony True Low Air Loss Tri-Therapy Mattress Replacement System

Item # 14200-48

- Feature filled True Low Air Loss active blower system for optimal microclimate control and patient comfort also provides pulsation and alternating pressure to optimize pressure redistribution and reduce shear and friction
- Designed to prevent, treat and heal pressure ulcers in the home or long term care setting
- Digital control unit offers 4 cycle times and adjustable comfort weight settings for optimal immersion and patient satisfaction
- 3 diagnostic audio and visual alarms alert for issues with air pressure, the system, or power
- System includes 20 individual air cells over a 2" foam base for power outage protection
- Pillow feature provides head stability & comfort
- Advanced Clinical and Care Giver Features: Seat Inflate, microprocessing feedback, lock-out and more!
- 8" deep air cells are easily removed for convenient servicing and inflate in under 2 minutes with Autofirm feature for quick delivery and set up
- Silver Ion Stretch Cover permanently kills 99.5% of germs, is fluid resistant, low shear and vapor permeable helping protect this skin from friction and moisture
- CPR valve allows for rapid deflation

[Learn More](#)

Pressure Prevention



PreserveTech™ Harmony "True" Low Air Loss Tri-Therapy System

Item # 14200N-42

- Designed to prevent, treat and heal pressure injuries in the home or long term care setting.
- Advanced, user friendly high-flow digital control unit offers (4) therapy cycle times ranging from 5 to 20 minutes, and (10) adjustable comfort weight settings for optimal immersion and patient satisfaction.
- High air flow "true" low air loss system wicks away moisture and humidity providing optimal micro-climate control, keeping the patient cool and dry.
- Features three diagnostic audible and visual alarms to alert for issues with air pressure, power or the system.
- 20 individual, 8" deep air cells provide optimal patient comfort and pressure redistribution.
- 2" foam base offers protection in the event of a power outage or system failure.
- Able to accommodate patients up to 550 lbs.
- The cell material, Nylon/TPU blend, provides a specialty surface that conforms to the specific shape of the patient (immersion), minimizing soft tissue distortion, reducing bone and muscle friction.
- Quick cell disconnects offer convenient servicing and auto firm feature inflates air cells in under two minutes for rapid set up and ease of care giving.

[Learn More](#)

Pressure Prevention



Balanced Aire Non-Powered Self Adjusting Convertible Mattress

Item # BA9600-NP-42

- Versatile reactive mattress replacement system with self adjusting air/foam cells provides outstanding pressure redistribution and shear/friction reduction
- Designed to prevent, treat and heal pressure ulcers in the home or long term care setting
- Add an alternating pressure pump and the Balanced Aire easily converts to a dynamic powered system (14005E or BA9600-PUMP)
- 2.5" Hybrid Visco foam top layer provides immersion, premium comfort and heat dissipation
- High density foam perimeter provides firm edge support and facilitates safe patient transfers
- Heel slope redistributes pressure away from vulnerable heels
- Self-adjustment can be open cell or closed cell to meet individual needs
- Self-Adjusting air cells recognize body weight and pressure and adjust to reduce interface pressure and improve patient comfort
- Eight non-circular cylinders prevent "rolling" or "gapping"
- Removable 4 way stretch PU cover is fluid resistant, low shear and vapor permeable helping protect the skin from friction and moisture
- Arrives patient ready easy to deliver, set up and transport

[Learn More](#)

Pressure Prevention



Balanced Aire Powered Self Adjusting Convertible Mattress

Item # BA9600-P-42

- Versatile reactive mattress replacement system with self adjusting air/foam cells provides outstanding pressure redistribution and shear/friction reduction
- Designed to prevent, treat and heal pressure ulcers in the home or long term care setting
- Add an alternating pressure pump and the Balanced Aire easily converts to a dynamic powered system (14005E or BA9600-PUMP)
- 2.5" Hybrid Visco foam top layer provides immersion, premium comfort and heat dissipation
- High density foam perimeter provides firm edge support and facilitates safe patient transfers
- Heel slope redistributes pressure away from vulnerable heels
- Self-adjustment can be open cell or closed cell to meet individual needs
- Self-Adjusting air cells recognize body weight and pressure and adjust to reduce interface pressure and improve patient comfort
- Eight non-circular cylinders prevent "rolling" or "gapping"
- Removable 4 way stretch PU cover is fluid resistant, low shear and vapor permeable helping protect the skin from friction and moisture
- Arrives patient ready easy to deliver, set up and transport

[Learn More](#)

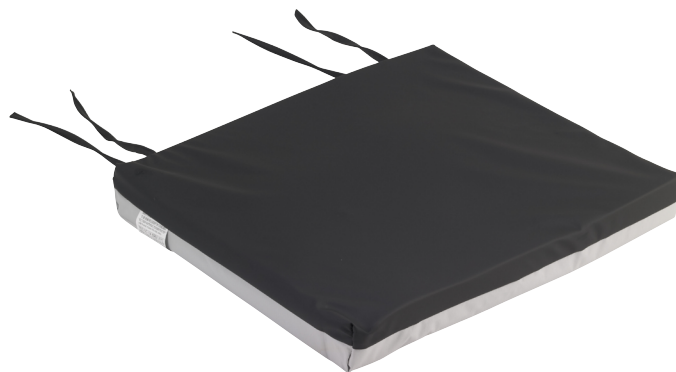
Pressure Prevention

Gel-U-Seat™ Lite General Use 2" Gel/Foam Wheelchair Cushion

Item # 8040-7: 22"W x 18"L x 2"H

Item # 8040-9: 24"W x 18"L x 2"H

- Offering great versatility, the Gel-U-Seat™ Lite provides comfort to almost all wheelchair users
- Unique dual-chambered gel bladder keeps the pelvis in contact with pressure redistributing cooling gel
- The cover is fluid resistant low-shear nylon zippered and removable with a durable vinyl bottom
- Secures easily to wheelchair with 12" tie straps
- Meets flammability standard TB117

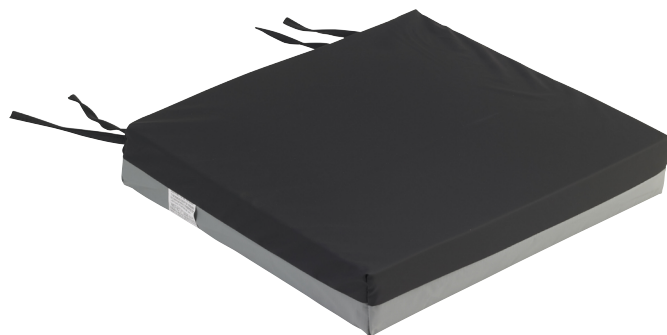
[Learn More](#)

Gel-U-Seat™ Skin Protection 3" Gel/Foam Wheelchair Cushion

Item # 8046-5: 22"W x 18"L x 3"H

Item # 8046-7: 24"W x 18"L x 3"H

- The Gel-U-Seat™ skin protection cushion has a high density foam shell surrounding a uniquely designed gel bladder
- Dual chambered gel bladder provides proper immersion and envelopment for pressure redistribution
- Cover is water resistant and low shear stretch to reduce heat and moisture build-up
- Convenient 12" tie straps secure the cushion to the wheelchair
- Meets flammability standard TB117

[Learn More](#)

Pressure Prevention

Lumbar Support General Use Wheelchair Back Cushion

Item # 8033: 22"W x 19"L

- Memory-foam back cushion provides support, comfort and a tactile curve to improve posture
- Durable Masonite board prevents hammocking in sling-back wheelchair Easily removed as per patient preference
- Conforms to lumbar curve to support lower back
- Sealed liner protects foam core from moisture
- Nylon stretch cover is water resistant, non-slip vinyl back prevents the cushion from sliding and is waterproof
- Adjustable Straps easily attach to wheelchair
- Meets flammability standard TB117

[Learn More](#)



Adjustable Tension General Use Wheelchair Back Cushion

Item # 14301: 16"W x 23.5"L - Adj 22" - 26"

- Ideal for patients with mild positioning needs
- Versatile back support system that improves patient comfort and posture
- 1" thick high density foam pad provides optimal pressure redistribution
- Secures directly over wheelchair canes for added strength, stability and safety
- 5 Adjustment straps featured for multi-purpose back support and customization to individual seating needs
- Handy back pocket is convenient for carrying keys, water bottle, medications, tissues and more

[Learn More](#)



Patient Lifts

GRAVIS Floor Lift Power Base

Item # FLP600

- Base option: Power
- Elegant, contemporary design with soft lines but still heavy duty
- Oversized sealed rear casters roll easily and lock securely
- Easily lifts resident from floor
- Redundant controls allow for use even if hand control is inoperable
- Smart & Safety Technology – LCD display
- Visual battery fuel indicator on Hand Pendant and Lift Control Module
- Auditable low battery alert fuel indicator
- Lift safety stop if resident or caregiver accidentally gets in the way of the boom arm

[Learn More](#)



GRAVIS Floor Lift Manual Base

Item # FLNP600

- Base option: Manual
- Elegant, contemporary design with soft lines but still heavy duty
- Oversized sealed rear casters roll easily and lock securely
- Easily lifts resident from floor
- Redundant controls allow for use even if hand control is inoperable
- Smart & Safety Technology – LCD display
- Visual battery fuel indicator on Hand Pendant and Lift Control Module
- Auditable low battery alert fuel indicator
- Lift safety stop if resident or caregiver accidentally gets in the way of the boom arm

[Learn More](#)



Patient Lifts / Slings

Bariatric Battery-Powered Lift

Item # 13244

- To charge, simply plug in unit Battery does not need to be removed to be charged
- Lift will not operate while plugged in Ideal for home-care use
- Jumbo actuator pump with emergency button can switch to manual mode to lower patient down safely
- Base legs adjust easily and lock securely into open position with padded shifter handle
- Extra wide coated cradle with 360° rotation with 4-point hook up (Can fit under bed)

[Learn More](#)



Seat/Back Sling

Item # 13060

[Learn More](#)



Seat/Back Sling With Commode Cutout

Item # 13061

[Learn More](#)



Patient Room



3-Position Recliner

Item # D574EW-CHAR: Charcoal
Item # D574EW-CHOC: Chocolate
Item # D574EW-TAN: Tan

- 3 positions: upright, deep recline and elevated leg rest/footrest
- Retractable lock bar secures the chair in the desired position
- Self-adjusting suspension in the seat prevents bottoming out
- Side panels "pop off" for easy cleaning and maintenance
- Large, blow-molded tray locks in 5 positions and can be stored on the side of the chair
- 5" casters (2 with locks) make it easy to move and secure the recliner
- Wide, comfortable armrests are angled to provide support in any reclined position
- Neutral-colored, sturdy steel frame is easy to clean and maintain
- Moisture barrier on seat prevents seepage
- Comfortable built-in headrest
- Foam and vinyl meet California Technical Bulletin 117

[Learn More](#)

Patient Room

Foot Stool

Item # 13037-1SV

- Manufactured with 1" steel tubing
- Silver vein finish easy-to-maintain and less institutional looking
- Non-skid ribbed rubber platform

[Learn More](#)



Foot Stool With Handrail

Item # 13062-1SV

- Manufactured with 1" steel tubing
- Silver vein finish easy-to-maintain and less institutional looking
- Non-skid ribbed rubber platform

[Learn More](#)



Half Length Bed Rail For Bariatric Lightweight Beds

Item # 15021BV-LW

- Durable steel construction in rich brown finish offers attractive and easy-to-maintain homecare style
- Easy to install half Rail designed specifically for Lightweight Bariatric Homecare Bed series
- Product Safety & Performance Standards: Incompliance with FDA Hospital Bed System Dimensional Assessment Guidance to Reduce Entrapment as well as CPSC ASTM standards
- Ideal for maximum protection and support when bed is elevated

[Learn More](#)





CORPORATE OFFICE 🏠 99 Seaview Blvd., Port Washington, NY 11050 📞 877-374-8763 🌐 www.drivemedical.com

CANADA OFFICE 🏠 256 Aviva Park Drive, Vaughan, Ontario Canada L4L 9C7 📞 866-752-1363

©2023 Medical Depot, Inc. dba Drive DeVilbiss Healthcare, 99 Seaview Boulevard, Port Washington, NY 11050. All trademarks used in association with the sale of products of Drive DeVilbiss are trademarks owned by Medical Depot, Inc. All other trademarks, trade names, service marks and logos referenced herein belong to their respective companies. Refer to product instruction guide for warranty details.